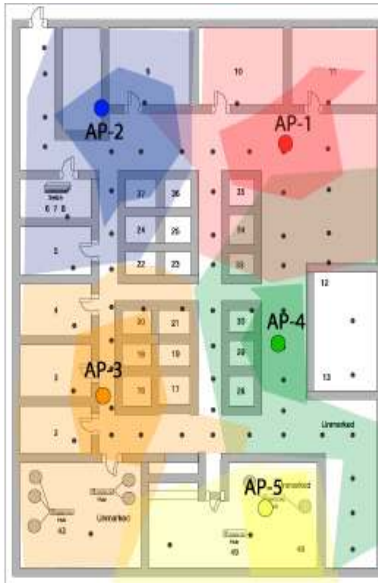




## Mobile Operators – Performance Auditor



Whether you're initiating an RF product/system rollout, or upgrading or expanding an existing program, our experienced team at 5 Bar Coverage can perform a performance audit to ensure the product or services are exact to your required specifications.

Our consultants will meet with your technical team to assess your current wireless program and discuss your objectives and goals. We will examine the system actual performance upon completion and cross check with the required Acceptance Test Procedures based on diverse locations, device functionality requirements, and compatibility with 3rd party applications.

Product and service performance audit will help mobile operators to conduct comprehensive check to ensure the contractual obligations are met by both suppliers and contractors.

Due to unfamiliarity with products, lack of test tools or unfamiliarity with methods to conduct proper testing procedures, mobile operators may not be able to conduct a proper performance audit.

For Product performance audit, we can offer the following services:

- In building System (active and passive)
- RF and Optical Repeaters
- TMAs or Boosters
- BDAs

For Service Performance Audit, we offer a wide range of services:

- Spectrum or Scanning Analysis of your wireless network

A technician will walk through your facility with a multi system scanner to create a colour map of the radio wave propagation within an enclosed area. This activity will give a good description of possible trouble spots and uncover any objects that might interfere with your network.

- Validation of infrastructure layout

We will review the physical setup of antenna placement as well as the cabling throughout the building to ensure proper connection of antennas, hubs, RF components, and cable support structure.



- Antenna point audit

We review the antenna points ensuring they are placed correctly and within the required location, as well as validating their output power. The antenna will be analyzed to determine the signal propagation and threshold.

- Deliverable Results

With the audits and evaluations that are performed 5 Bar Coverage will provide you with a full colour, bound report of your facility, complete with pictures of current antenna positions, an analysis of voice and data calls, as well as a coverage map.

The coverage map gives you a topology analysis. The topology diagram is a colour coded map overlaid on your blueprint illustrating redundancies, overlap, no-coverage zones (if any) and signal strengths as measured throughout the facility.

5 Bar Coverage also provide optional services in consultancy on optimize uptime while holding the line on costs for both existing and planned expansions.

### **Existing Equipment:**

- Analysis and diagnosis of RF signal availability/reliability issues, including in-office signal strength audits
- Documentation of back office facilities & equipment
- Recommendations for optimal use of existing equipment as well as upgrade capacity and integration strategies
- Physical and access security audits
- Disaster recovery/business continuity preparedness audits

### **Planned Expansion:**

- Selection of wireless standards, equipment, procurement and operational processes
- Vendor selection, including requirements development, the RFP process, and contract negotiation assistance
- Network design and effectiveness forecasting
- Site identification, prioritization, equipment acceptance testing, and facilities installation
- Project Management, including the turnaround of current projects lacking structure or results